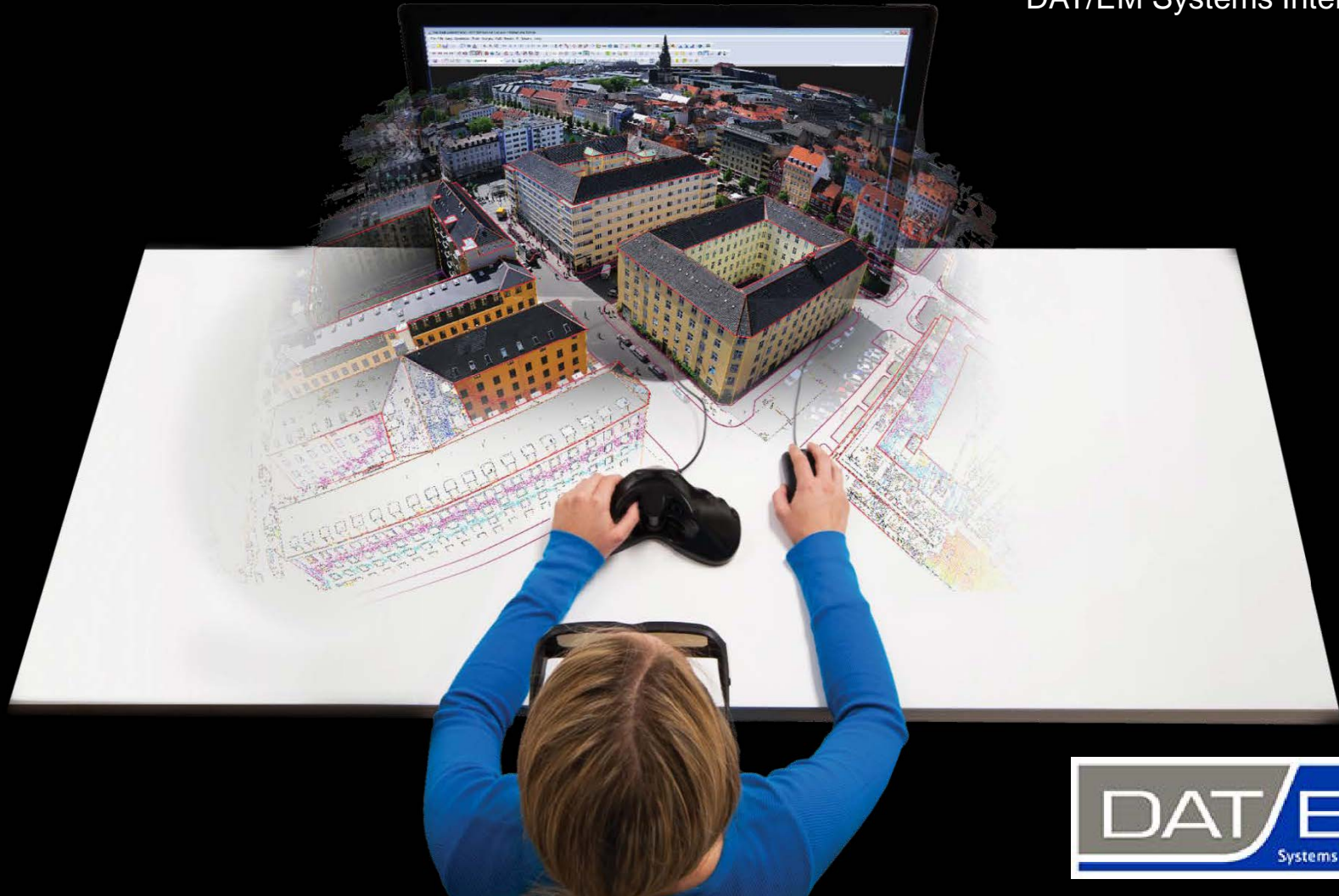


# Connect Global Mapper™ with the Summit Evolution™ Stereo Photogrammetric Workstation

Presented by Alissa Oder  
DAT/EM Support Department  
DAT/EM Systems International



# Agenda

## Connect Global Mapper™ with the Summit Evolution™ Stereo Photogrammetric Workstation

**DAT/EM Systems International**  
Products, Team, and Network

**Connecting Global Mapper to Summit Evolution**  
Activate DAT/EM Capture in two steps

**Why Connect to Summit Evolution**  
Overview of Summit Evolution  
Tools of the Global Mapper Extension  
Industry Examples

**Recap**

**Thank you / Questions**

# DAT/EM Systems International

Developing photogrammetric software and hardware since 1987



## DAT/EM Photogrammetric Suite



# DAT/EM Systems International



# The DAT/EM Network

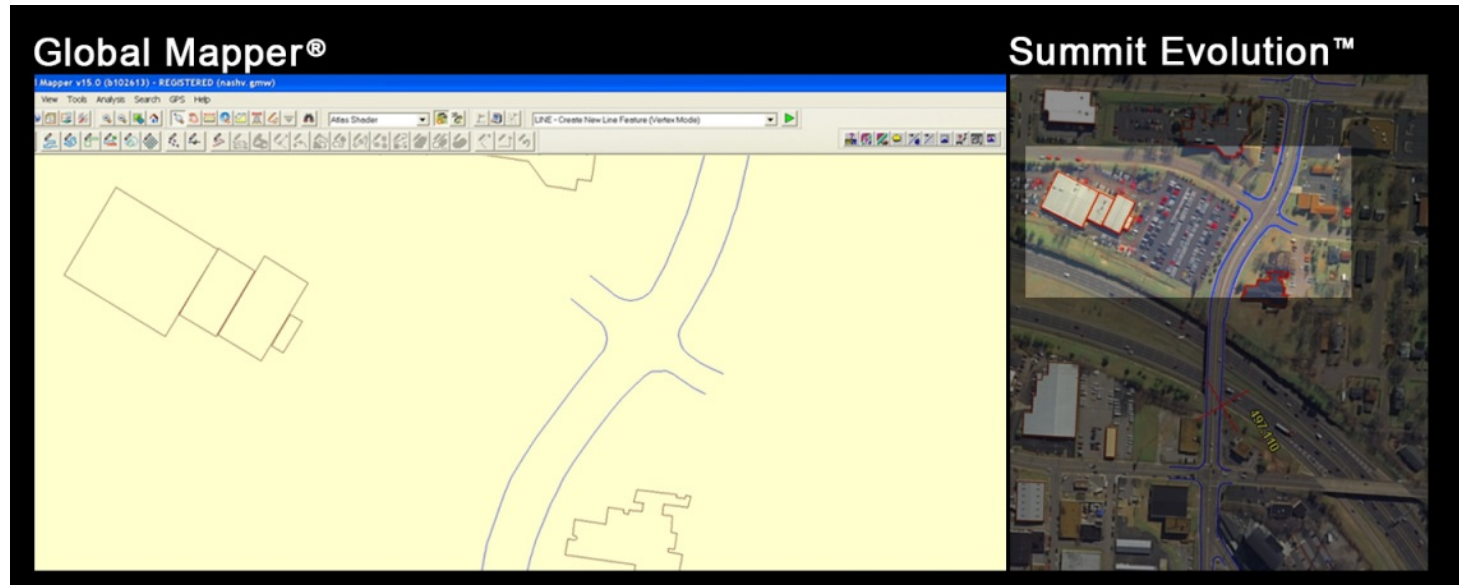
500+ clients in more than 70 countries  
with resellers throughout the world



# Connecting Global Mapper to Summit Evolution

# Connect Global Mapper to Summit Evolution

DAT/EM CAPTURE: Interface to Collect 3D Vector Information into Global Mapper

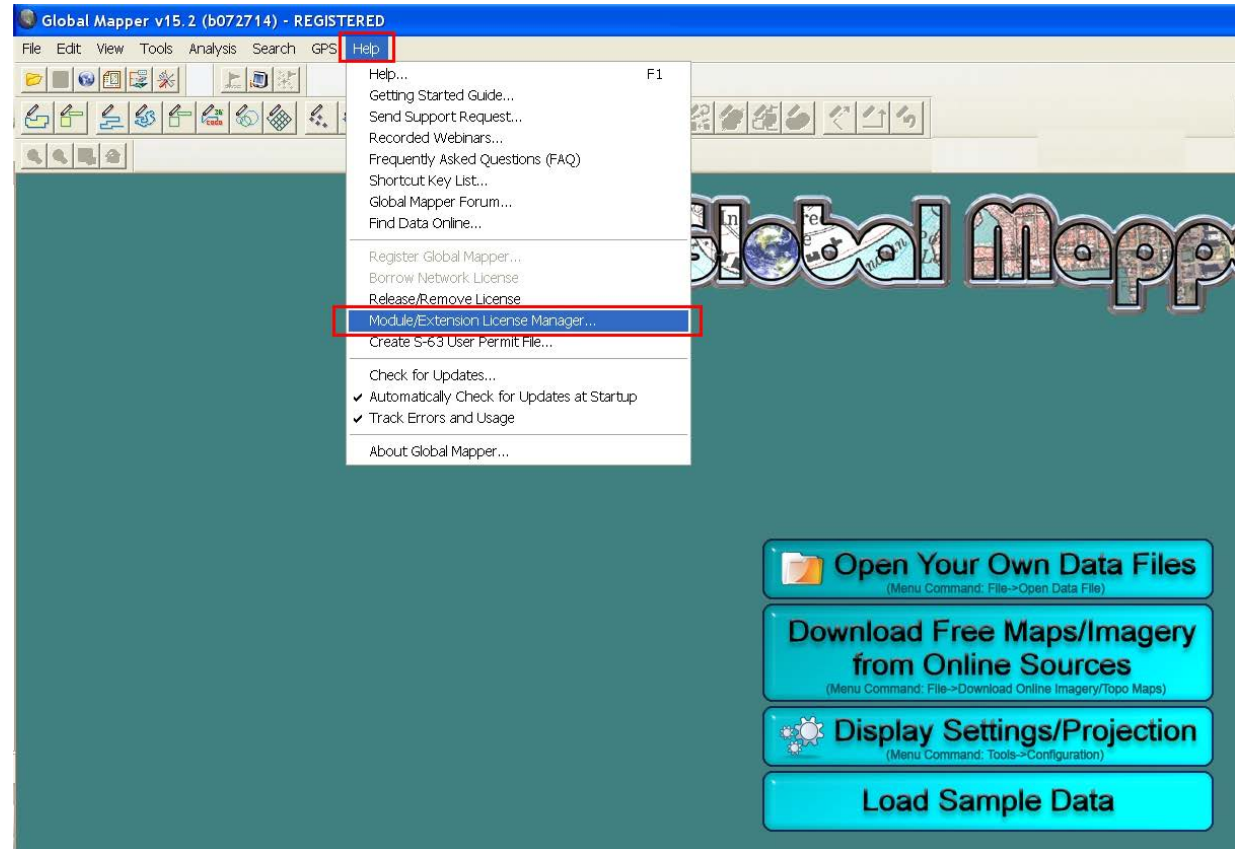


Installed with 32- or 64-bit Global Mapper Version 15.2 or higher and Summit Evolution version 7.1 or higher at no additional cost. You must own both Global Mapper and Summit for the extension to work.

# Connect Global Mapper to Summit Evolution

## Activate DAT/EM Capture (Step 1 of 2)

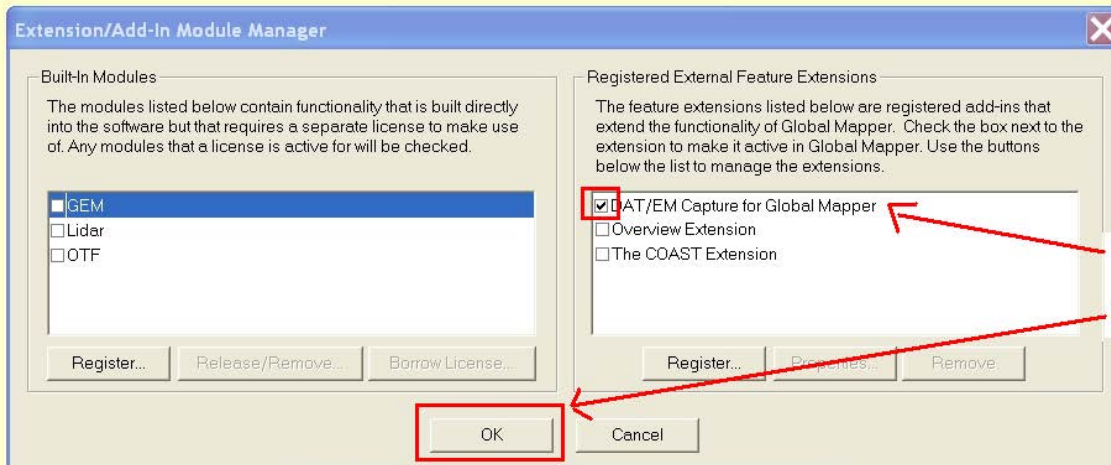
Select **Module/Extension License Manager** from the **Help** drop down menu in Global Mapper





# Connect Global Mapper to Summit Evolution

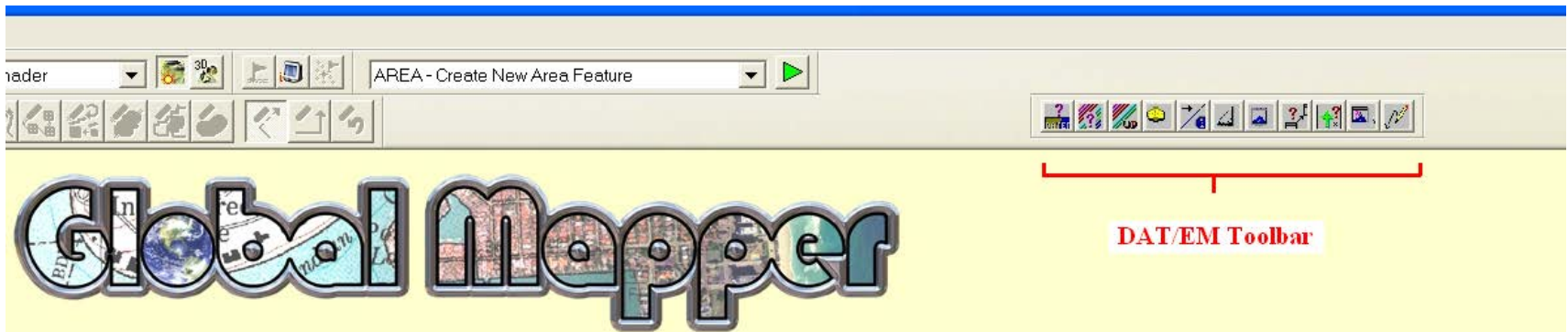
## Activate DAT/EM Capture (Step 2 of 2)



Check **DAT/EM Capture for Global Mapper** and Click **OK**

# DAT/EM Capture for Global Mapper

Now they are connected! You will see the DAT/EM Capture toolbar in the Global Mapper window.



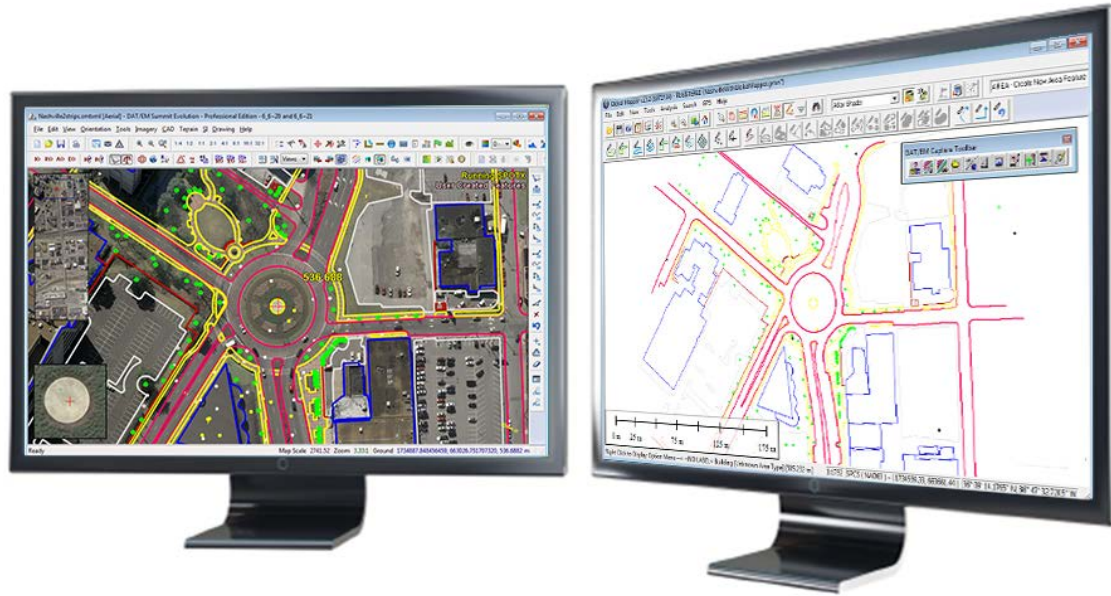
Being “connected” means:

- The Global Mapper view rotates to match the Summit view
- Summit controls the Global Mapper cursor in three dimensions
- Summit acts as a digitizer for Global Mapper
- DAT/EM Capture tools are available

# Why Connect Global Mapper to Summit Evolution?

# Summit Evolution

Photogrammetric Software to Extract and Edit 3D Vector Features from Stereo Imagery



Summit Evolution is a digital stereoplottor used for photogrammetry

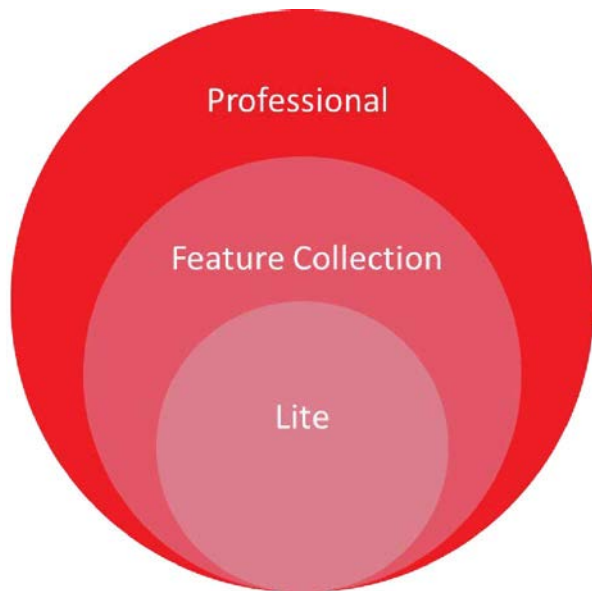


SUMMIT EVOLUTION™

DAT/EM®  
Systems International

# Three Levels of Summit Evolution

Use any Summit Evolution edition (Professional, Feature Collection or Lite) to open the prepared project and start the Global Mapper extension



## *Professional*

Full-function, fully capable digital photogrammetric workstation

## *Feature Collection*

Designed for 3D feature collection for those whose orientation requirements are met elsewhere

## *Lite*

Low-cost system for viewing, terrain following, sample measurement and basic editing in existing projects

# Hardware Needed for Summit Evolution

Summit Evolution requires a stereo display and other hardware

## *Professional*

Computer with stereo display and 3D digitizing device



## *Feature Collection*

Computer with stereo display and 3D digitizing device



## *Lite*

Computer with stereo display and 3-to-5-button system mouse with a wheel



See recommended and required hardware on our website:

[www.datem.com](http://www.datem.com) > Support menu > Configurations

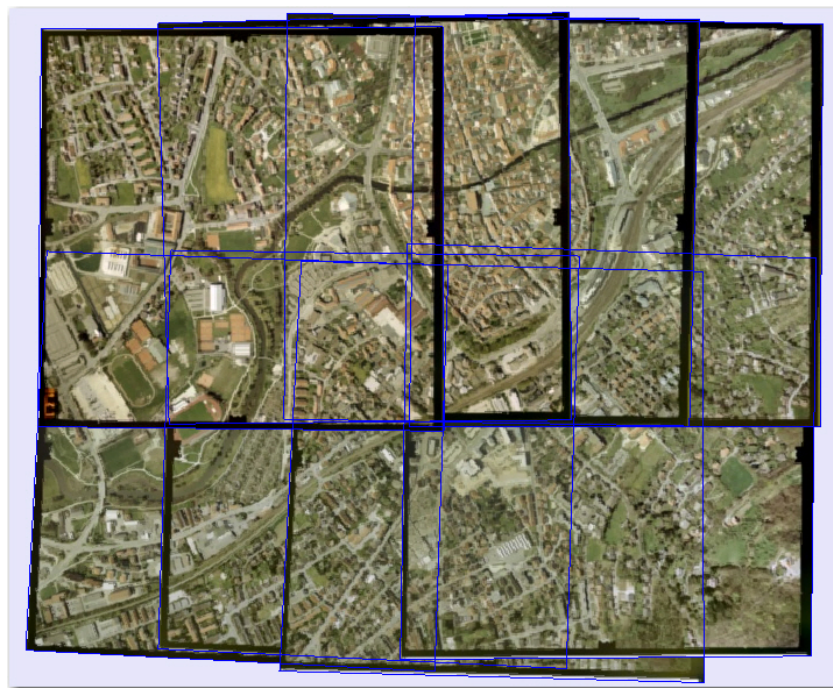
# Imagery Project Needed for Summit Evolution

Summit Evolution requires a ground-referenced imagery project

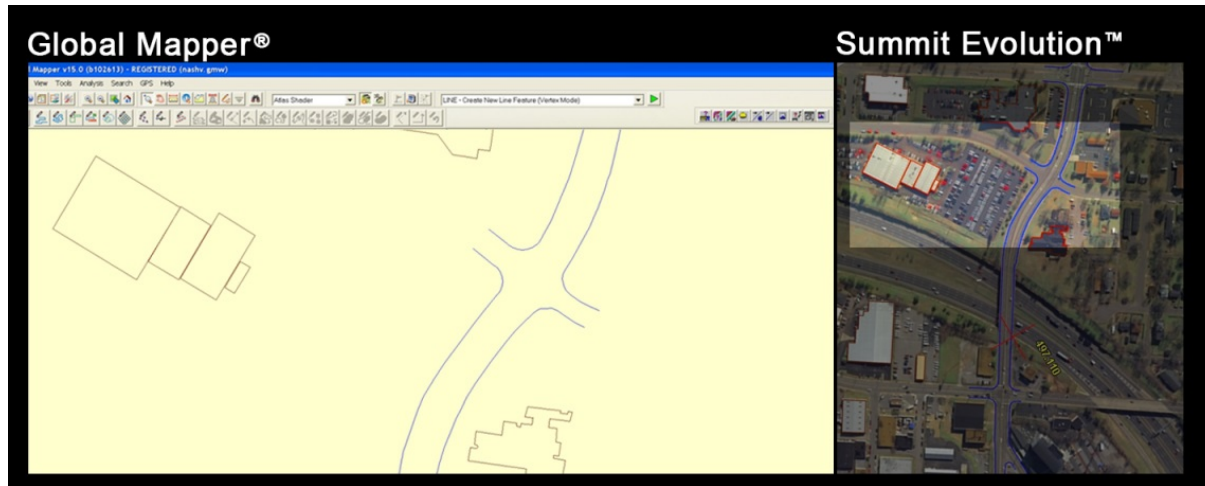
Summit Evolution creates or imports the pixel-to-ground orientation.

Typical sources of stereo imagery and/or prepared projects:

- National and local governments
- Private aerial photogrammetry companies
- Satellite imagery vendors



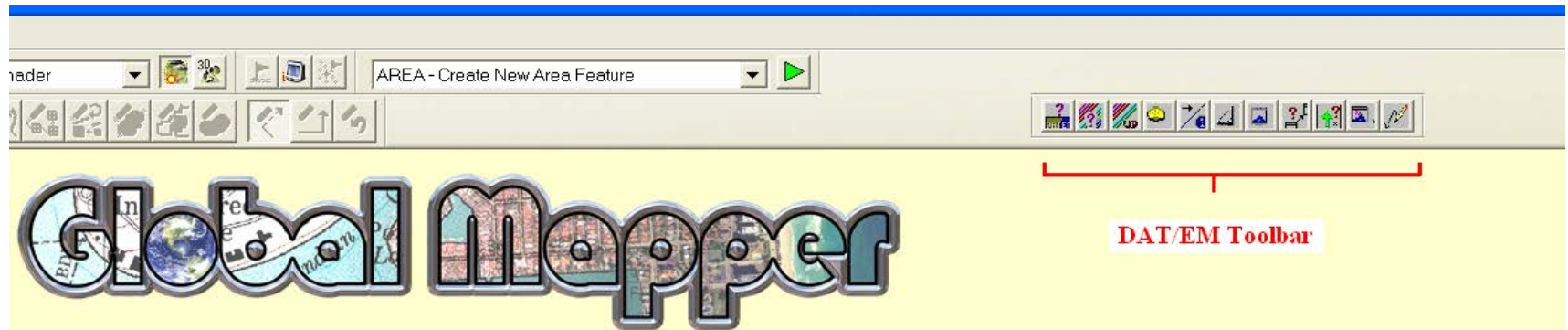
# Summit Evolution Capabilities in Global Mapper



- Collect and edit 3D data directly into Global Mapper
- Use Summit Evolution tools for panning, zooming and 3D positioning with measurement and terrain following tools
- Activate Summit Evolution functions from Global Mapper's home window
- Display ground-referenced photogrammetric imagery in stereo
- Track ground coordinates in both Summit and Global Mapper



# Summit Evolution Tools for Global Mapper

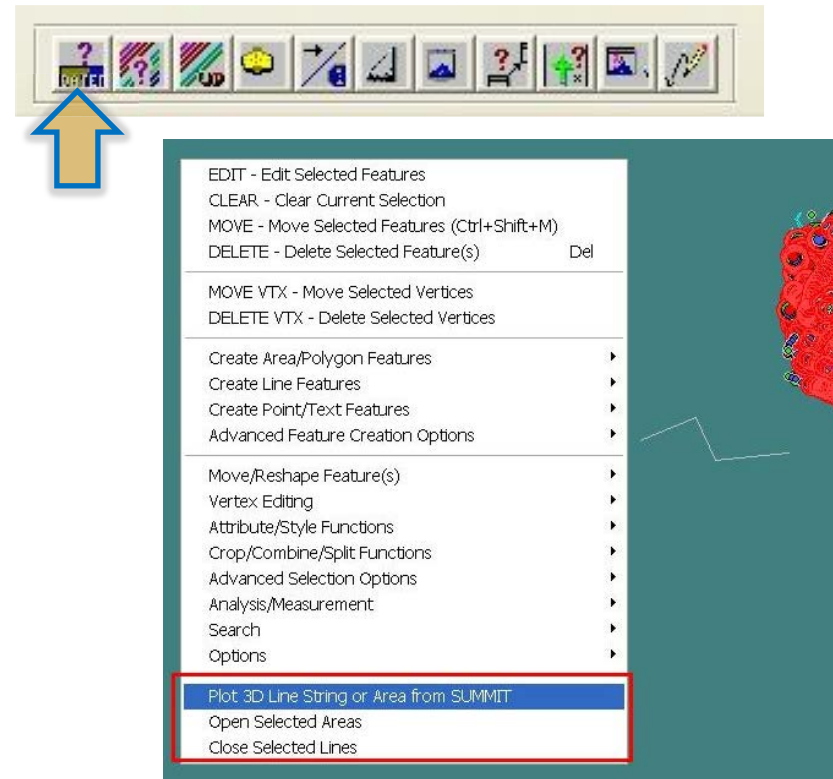


1. Capture Settings Dialog
2. SuperImposition Settings
3. SuperImposition Update
4. Summit Button Manager
5. DAT/EM Coordinates
6. DAT/EM Close
7. Fit
8. Datpan Settings
9. SPOTX
10. DAT/EM Extents
11. DAT/EM Drawing Tools

# DAT/EM Capture for Global Mapper

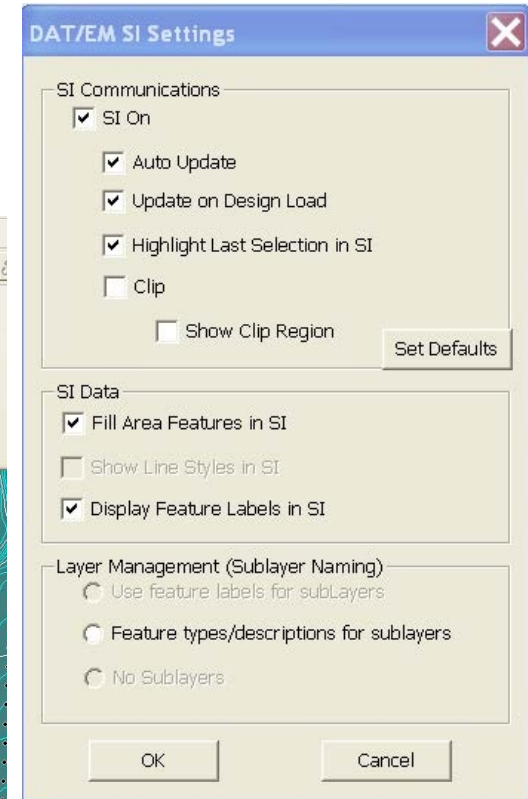
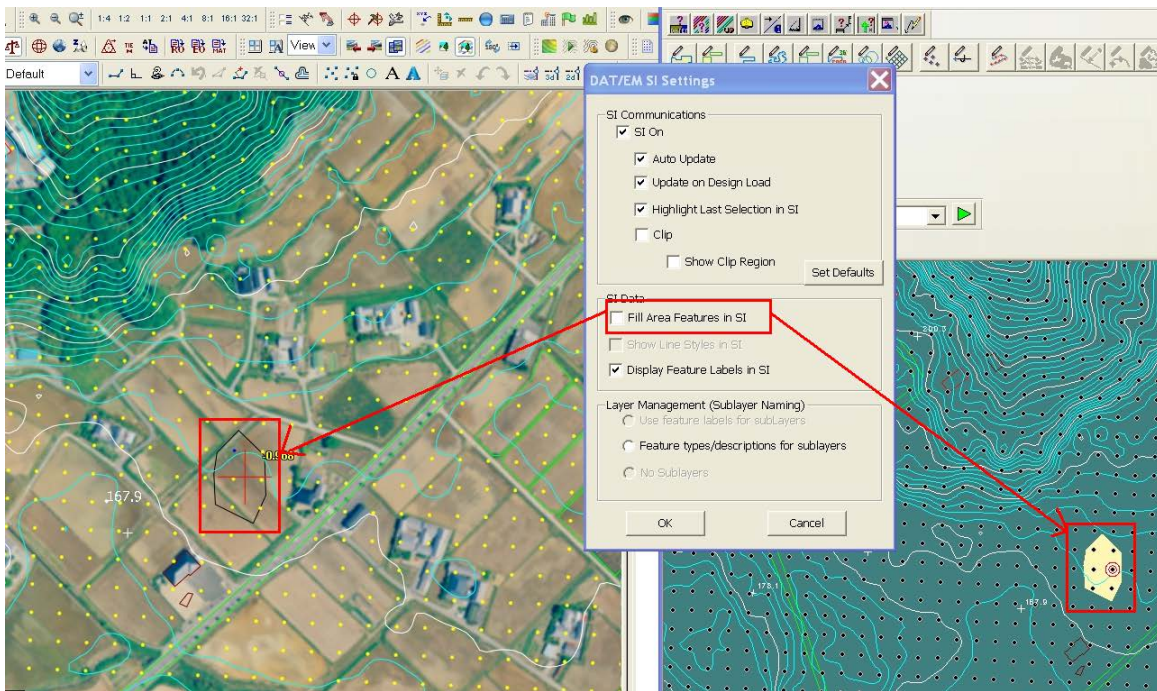
A few key options:

- Move stereoplotter cursor to snapped point
- Capture items added to Global Mapper's right click menu



# DAT/EM Capture for Global Mapper

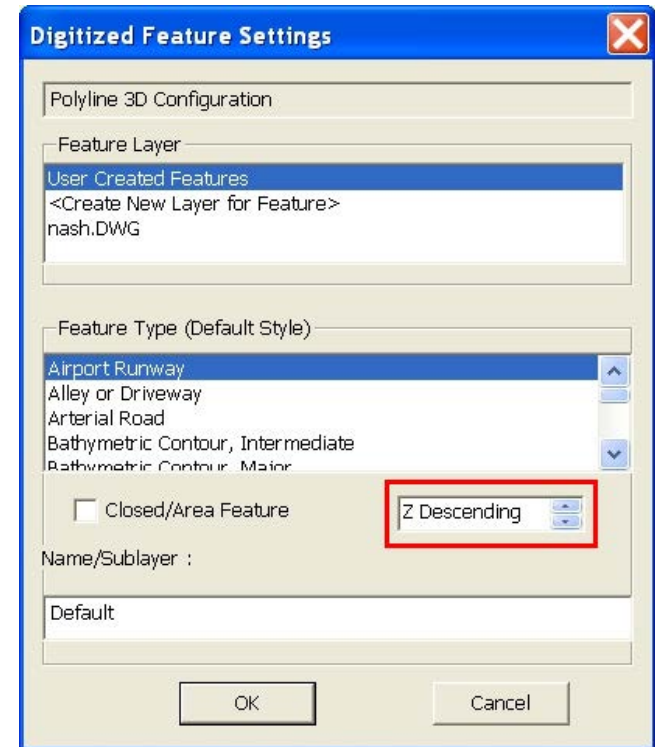
Superimposition “SI” options control the display of Global Mapper’s vectors onto Summit’s view



# DAT/EM Capture for Global Mapper

Drawing tools:

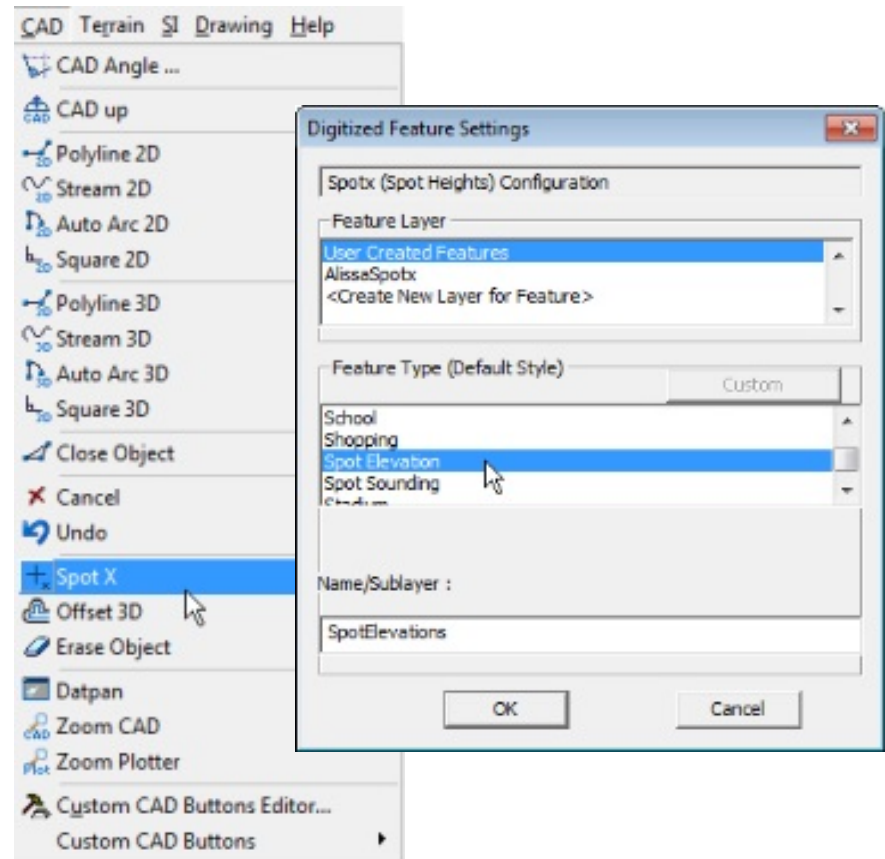
- **2D line string/area tool** – draws 2D features such as lakes, pools, elevation contours, flat roof lines
  - **3D line string/area tool** – draws 3D features such as rivers, tree area outlines, sloped roof lines
- + **3D line string/area monotonicity setting** – sets a rule for vertices to go only uphill or only downhill; usually used for water



# DAT/EM Capture for Global Mapper

Drawing tools, continued:

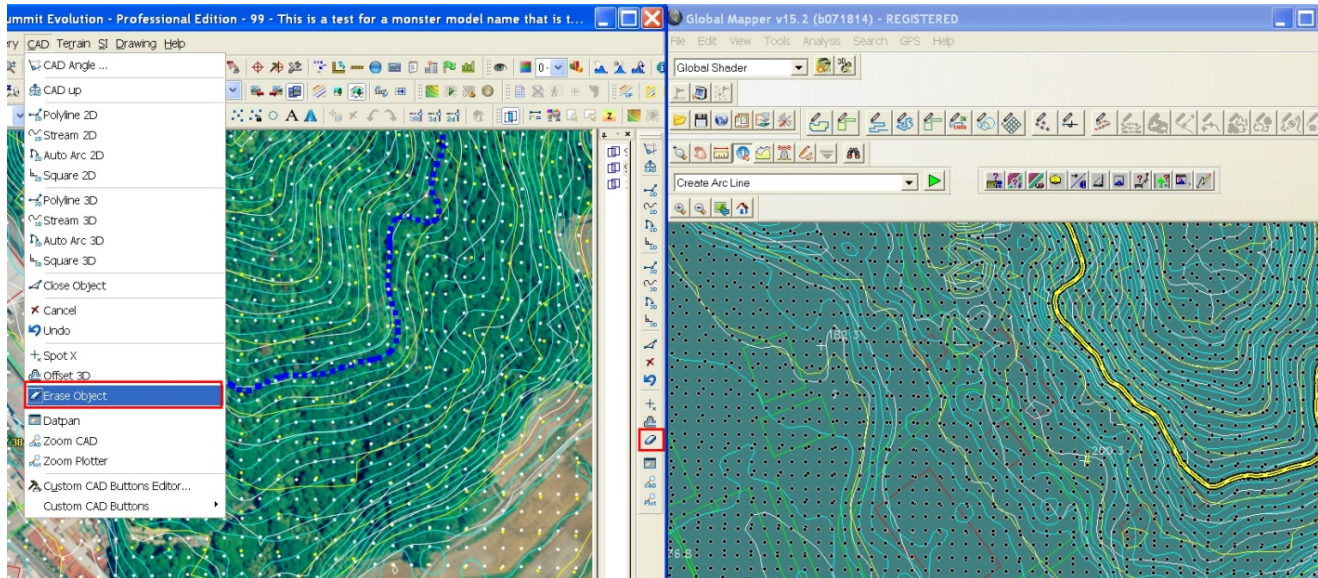
“SpotX” spot elevation tool



# DAT/EM Capture for Global Mapper

Editing tools:

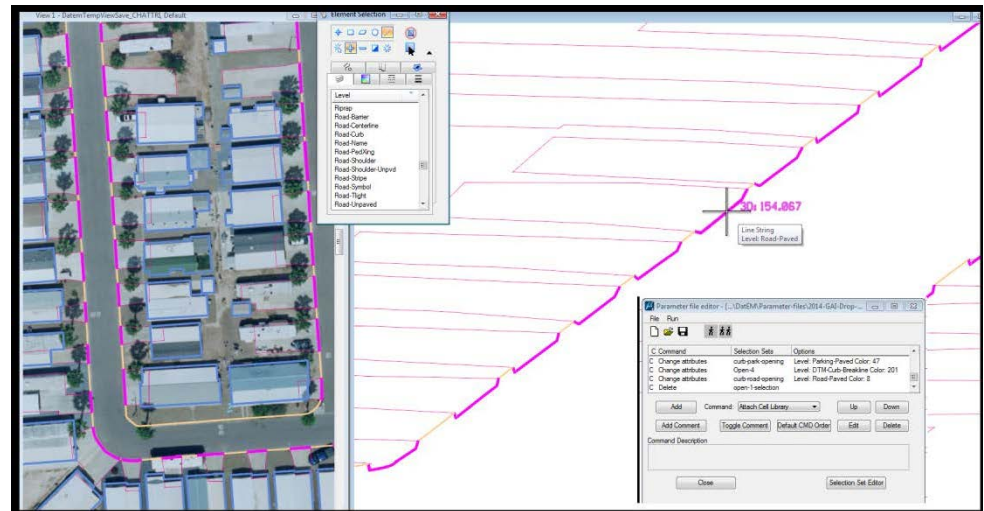
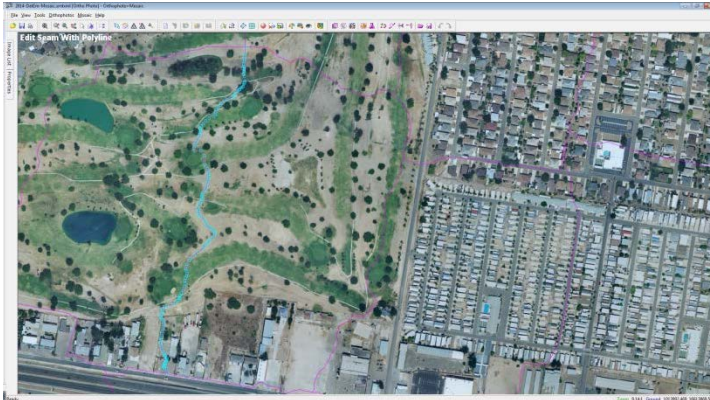
- **DAT/EM Close Object** closes a line feature to become either an area or an end-to-end snapped line
- **DAT/EM Erase** deletes the selected object



# Industry Example

## Using Summit Evolution in your workflow

Topographic Right of Way mapping for designing a Highway Relief Route from Topographic Design Survey.



Gorronдона & Associates, Inc. photogrammetrically compiled topographic mapping for 1-foot contour accuracy across approximately 5,052 acres. Final delivery included 2D and 3D planimetric topography vector files and orthophoto-mosaic images at 6-inch pixel resolution.

# Industry Example

## Using Summit Evolution in your workflow



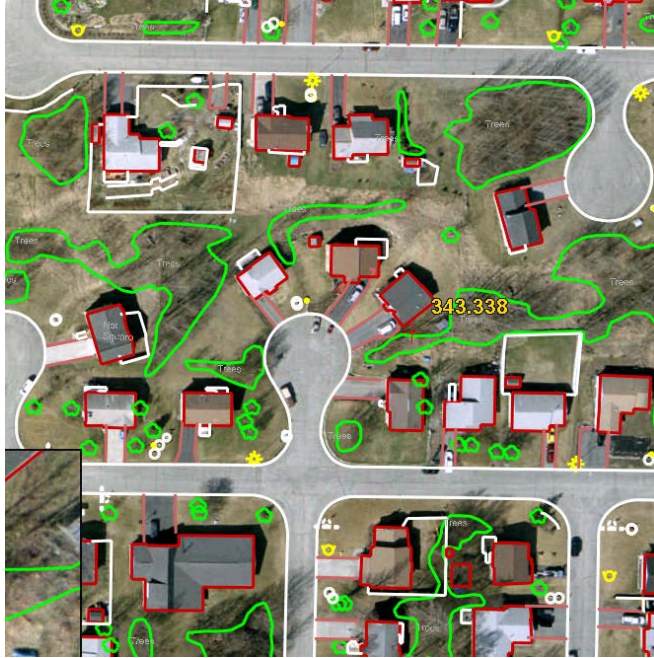
Woolpert, Inc. used Summit Evolution to collect and process digital multi-spectral aerial imagery and LiDAR data for more than 40,000 square miles that make up the State of Ohio. The imagery was collected at a one-foot pixel resolution and delivered in 5,000 x 5,000 foot tiles along with LiDAR data and derived digital elevation models (DEMs).<sup>1</sup>

1. Rees, Eric van, "Photogrammetry at Woolpert" *GeoInformatics*, April/May 2014: p. 10-12





# Recap



- Summit Evolution is a photogrammetric stereoplotter with three editions: Professional, Feature Collection, and Lite
- With a Summit purchase or support contract, connect Summit v.7.1 to Global Mapper v.15.2 at no additional cost
- DAT/EM Capture is the interface that collects 3D vector information from Summit Evolution into Global Mapper
- Activate DAT/EM Capture for Global Mapper in two steps
- Connecting Global Mapper to Summit Evolution allows you to digitize 3D vectors and check existing data for accuracy

# Thank You / Questions



## **DAT/EM Systems International**

8240 Sandlewood Place, Suite 101

Anchorage, Alaska 99507-3122 • USA

[sales@datem.com](mailto:sales@datem.com)

907.522.3681

[www.datem.com](http://www.datem.com)

Presenter, Alissa Oder: [support@datem.com](mailto:support@datem.com)

## **DAT/EM Sales and Technical Resources in Canada**

Ken Byres

Techport Services, Vancouver BC

778.686.0040

[www.techportservice.com](http://www.techportservice.com)

[KenByres@datem.com](mailto:KenByres@datem.com)

With additional regional representatives

Adam Boczek, Thunder Bay ON

André Verville and Eric L'heureux, Lévis QC