



The Height of Digital Stereoplotter Technology

SUMMIT EVOLUTION™

SUMMIT EVOLUTION takes 3D digital photogrammetry to a new level with its powerful combination of digital stereoplotter, CAD/GIS interfaces, video superimposition, and automated feature editing. Image features from a **SUMMIT EVOLUTION** project are digitized directly into AutoCAD®, MicroStation® or ArcGIS® files. **DAT/EM's SUPER/IMPOSITION™** is integrated into every **SUMMIT EVOLUTION** System, as well as orientation procedures, coordinate transformation, mapping-related digitizing tools, and the **MAP/EDITOR** software.

SUMMIT EVOLUTION's projects may be created from a wide range of imagery, including scanned film and digital aerial, close range, digital sensor, orthophoto, synthetic aperture radar, and satellite sources. It can also import projects from 3rd-party systems, and bring them into immediate production as **SUMMIT EVOLUTION** projects. Projects that are not already 3D can use the Follow Terrain tool to automate and produce 3D results.

Reach for new heights in 3D mapping technology with
SUMMIT EVOLUTION from **DAT/EM SYSTEMS INTERNATIONAL**

DAT/EM SYSTEMS INTERNATIONAL
8240 Sandlewood Place, Suite 101
Anchorage, Alaska 99507-3122 U.S.A.

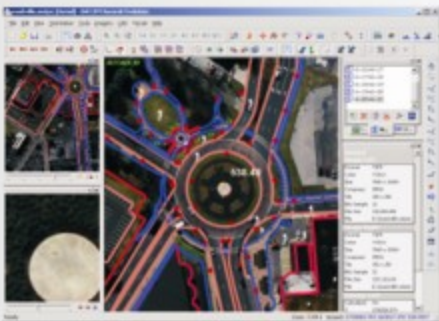
Tel: 907-522-3681
Fax: 907-522-3688
Toll-free: 800-770-3681

Email: sales@datem.com
Web: www.datem.com

For a complete list of our distributors
visit www.datem.com/distributors.html



Mt. Huntington, Alaska



SUMMIT EVOLUTION Features:

- Supports color and grayscale imagery from scanned film and digital aerial, close range, orthophoto, satellite and synthetic aperture radar
- Imports third-party softcopy projects and other orientation files for quick setup
- Digitizes directly into AutoCAD, MicroStation, or ArcGIS
- Superimposition of CAD/GIS vectors over image view
- Bird's-eye, Close Up, and project overviews
- Sub-pixel zooming and measurement
- Unlimited zoom levels
- Full range of manual and automatic orientations
- Flexible export and import tool for 3rd-party aerotriangulation packages
- Robust image management tools including histogram adjustment
- Automatic elevation snapping and terrain following tools
- Optional Capture Contour module allows contour generation with INPHO SCOP software

Supplied with SUMMIT EVOLUTION:

- SUMMIT EVOLUTION software
- DAT/EM CAPTURE for MicroStation, AutoCAD or ArcGIS
- MAP/EDITOR automated editing software for AutoCAD or MicroStation
- SUPER/IMPOSITION software
- Operation Manuals
- One year system support

Available stereoviewing options:

- PLANAR® SD1710 3D Desktop Monitor; or
- StereoGraphics® Z screen® with 3 passive glasses or StereoGraphics Crystal Eyes® emitter with 2 active glasses; or
- NuVision® Wireless Stereoscopic glasses (2 pairs and emitter) or NuVision 21" Stereoscopic Display Kit

Available input devices:

- Immersion SoftMouse®; or
- ABC Stealth Mouse™ (ABC Stealth Mouse requires an additional interface box); or
- DAT/EM XY handwheels with Z foot disk and 3 foot pedals
- DAT/EM KEYPAD

Recommended configuration:

- **PC Computer:** Dell Precision 670 Workstation
- **Operating System:** Windows® 2000 or Windows XP® (with latest service pack) and Internet Explorer® 6.0 or greater
- **Processor:** Intel® Xeon® (Dual) with 3.0 GHz processor or higher
- **Memory:** 2GB of SDRAM
- **Hard Drive:** 160 GB or larger hard drive (7,200 RPM speed)
- **Monitors:** Dual monitors, 21" capable of a refresh rate of 100Hz or greater
- **CD-ROM Drive and DVD Drive**
- **Ports:** USB and serial ports to support hardware connections
- **Graphics card:** nVidia® Quadro Fx3450 PCI Express 16x 256MB
- **Software:** AutoCAD® 2000 series, MicroStation® V8 or 2004 Edition, ArcGIS® 9.1



DAT/EM SYSTEMS INTERNATIONAL
8240 Sandlewood Place, Suite 101
Anchorage, Alaska 99507-3122 U.S.A.

Tel: 907-522-3681
Fax: 907-522-3688
Toll-free: 800-770-3681

Email: sales@datem.com
Web: www.datem.com

For a complete list of our distributors
visit www.datem.com/distributors.html